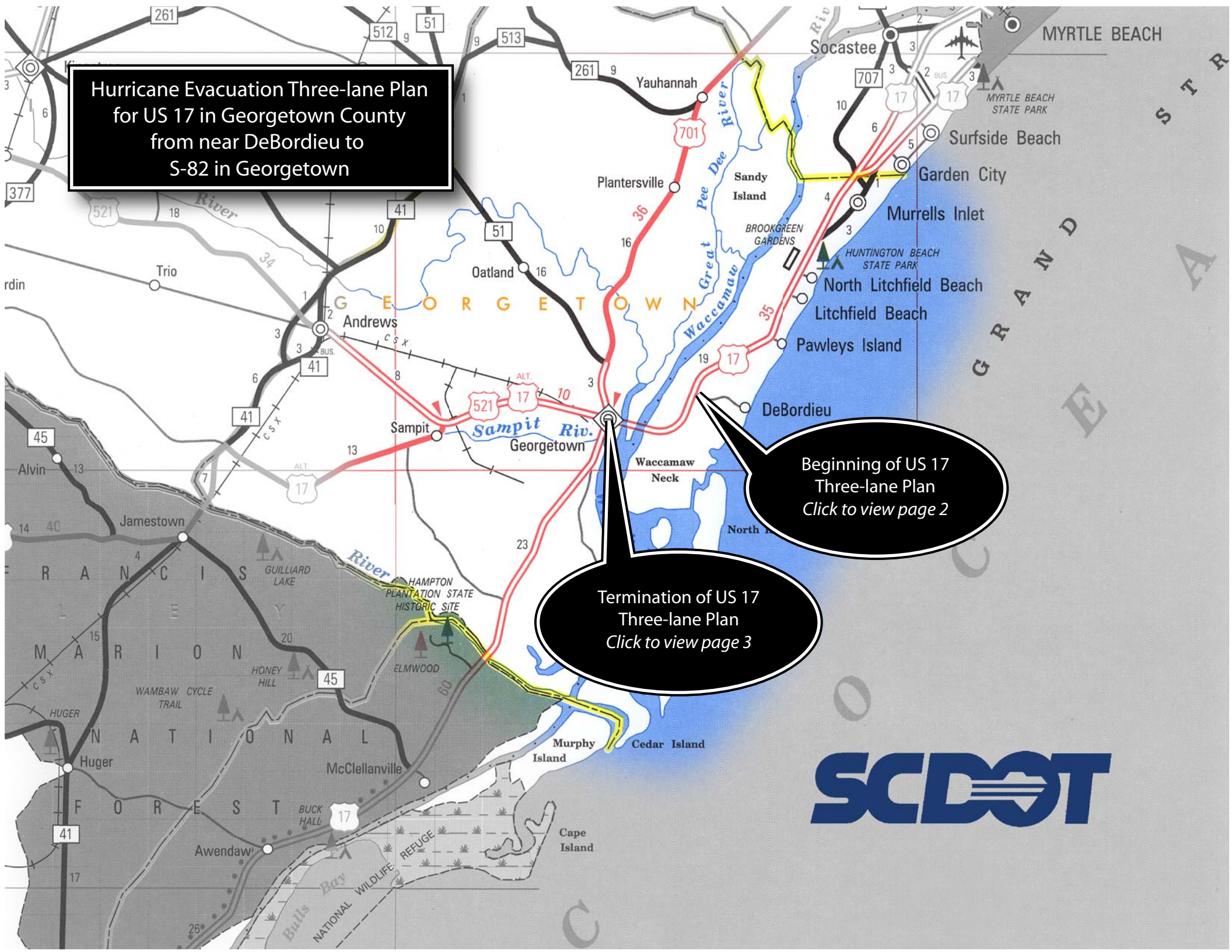


**Hurricane Evacuation Three-lane Plan
for US 17 in Georgetown County
from near DeBordieu to
S-82 in Georgetown**

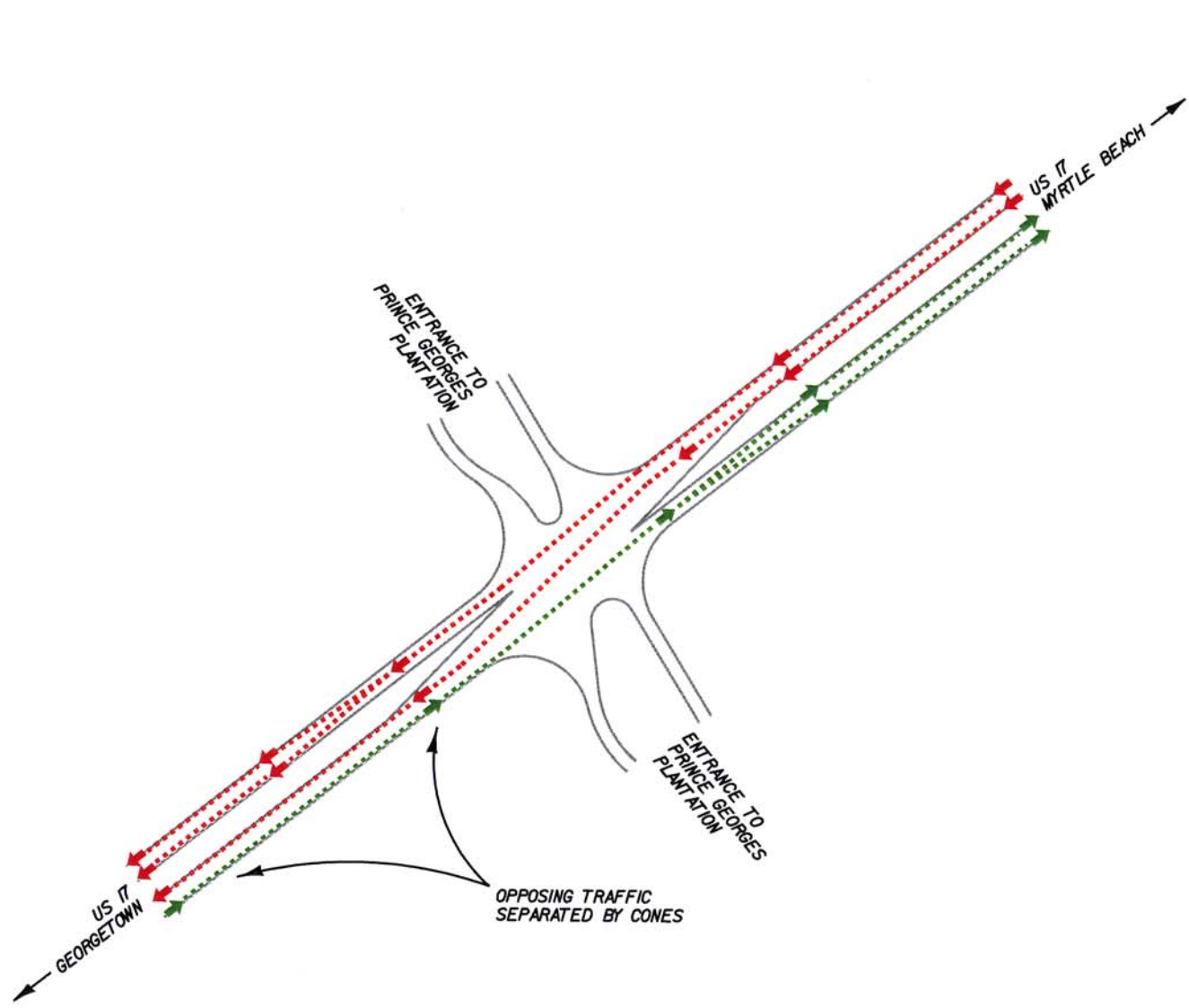


Beginning of US 17
Three-lane Plan
Click to view page 2

Termination of US 17
Three-lane Plan
Click to view page 3



HURRICANE EVACUATION TRAFFIC FLOW PLAN
BEGINNING OF US 17 THREE-LANE PLAN



US 17 near DeBordieu
Georgetown County



HURRICANE EVACUATION TRAFFIC FLOW PLAN
TERMINATION OF US 17 THREE-LANE PLAN

